



TAKE YOUR

PASSION

AND

PURPOSE TO NEW HEIGHTS

WITH YESHIVA'S ONLINE MASTER OF SOCIAL WORK

“

You'll love the online program, any information you need is there for you, all staff members are working along with you. You will not be alone in this.

”

– Pierina Cordova, MSW Candidate 2020

Rankings and Accolades

TOP 10

School of Social Work in the State of New York¹



TOP 55

Best Value School²



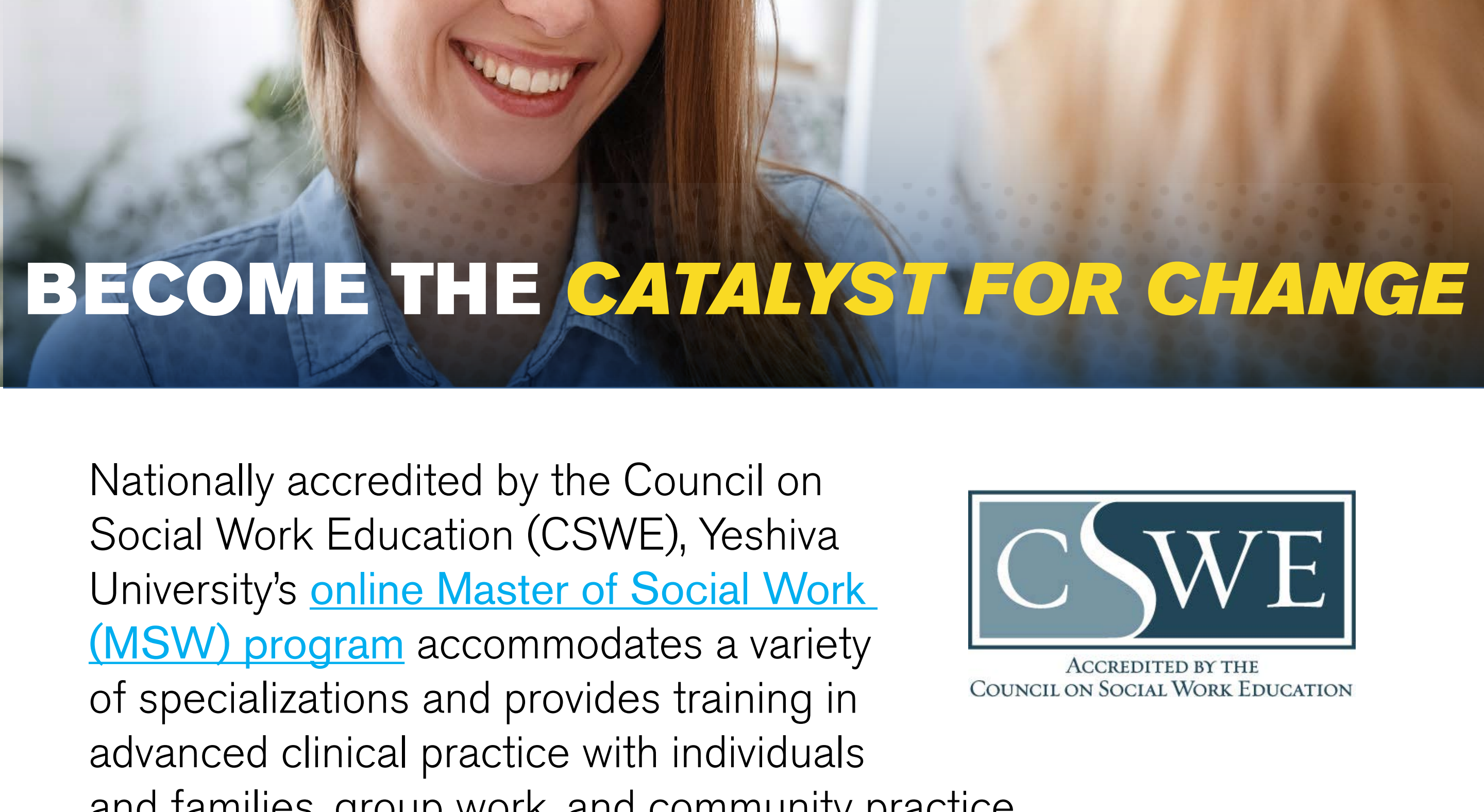
TOP 80

National University²



1 Retrieved on November 2, 2020, from usnews.com/best-graduate-schools/top-health-schools/yeshiva-university-197708

2 Retrieved on November 2, 2020, from usnews.com/best-colleges/yeshiva-university-2903/overall-rankings

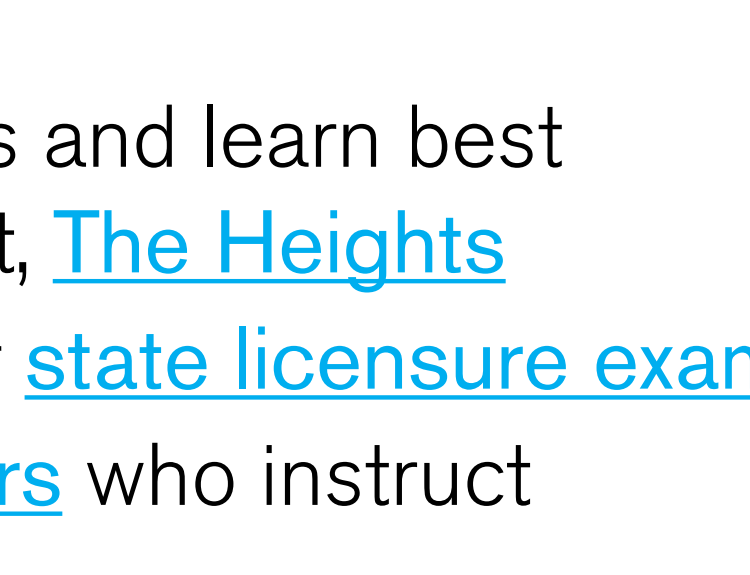


BECOME THE

CATALYST FOR CHANGE

Nationally accredited by the Council on Social Work Education (CSWE), Yeshiva University's [online Master of Social Work \(MSW\) program](#) accommodates a variety of specializations and provides training in advanced clinical practice with individuals and families, group work, and community practice.

- Prepare for real-life challenges with our [methods-based curriculum](#)
- Interact with diverse simulated communities and learn best practices in our virtual learning environment, [The Heights](#)
- Gain knowledge and skills needed to sit for [state licensure exams](#)
- Learn from the same [seasoned practitioners](#) who instruct on-ground students
- Choose one of three MSW pathways: **Pursue a general-track MSW, earn an additional Gerontology and Palliative Care Embedded Certification, or earn an added Credentialed Alcohol and Substance Abuse Counselor (CASAC) Credentialing**



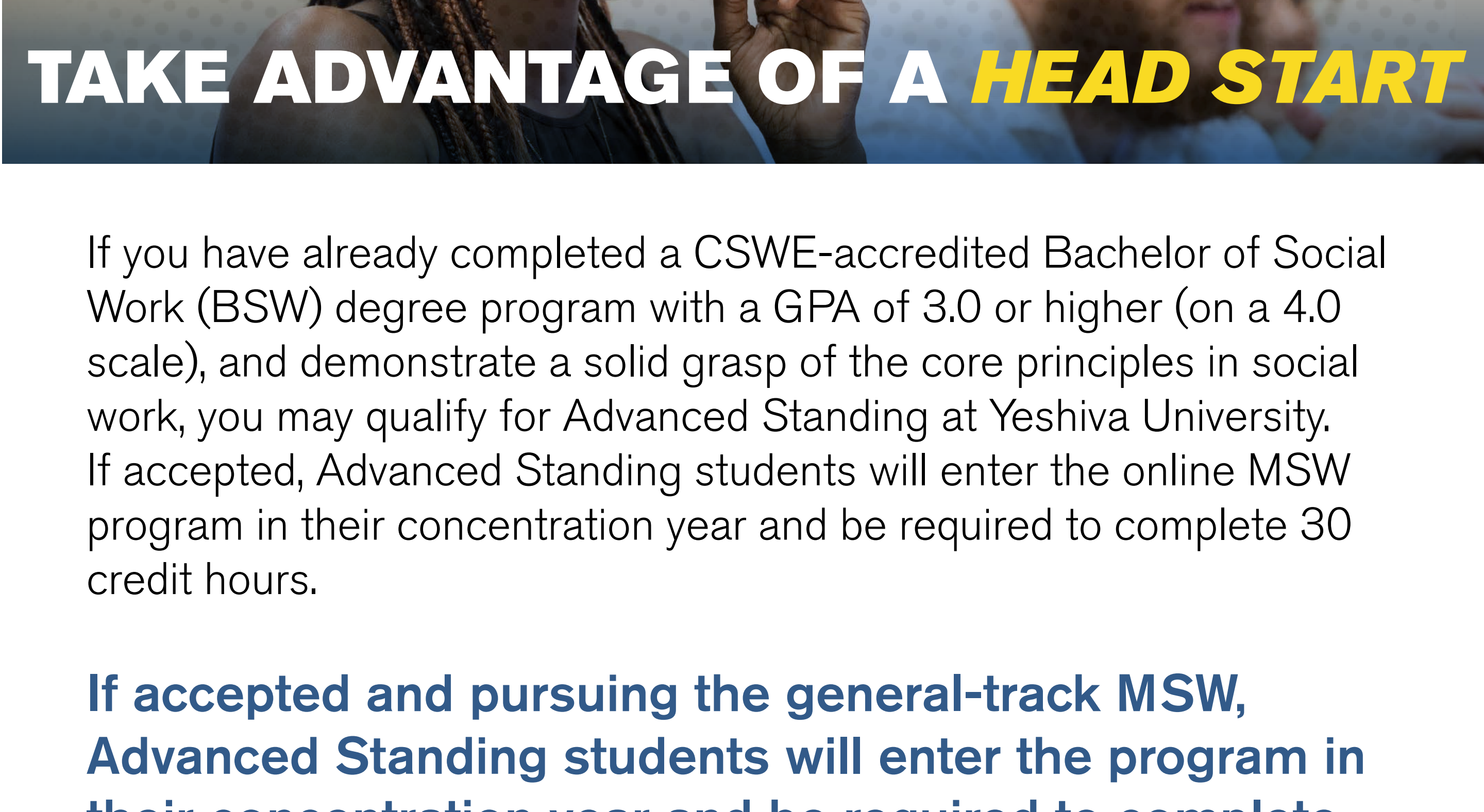
This is where passion and purpose fully form, and where your greatest opportunity for change awaits.

Finishing Strong Pays Off

Yeshiva University is pleased to offer a 10 percent degree completion scholarship* for all new online students for the online Master of Social Work.

Find Out More

*For traditional online MSW, half of the scholarship funds will be credited toward the tuition after completing 30 credits and then remaining amount will be credited toward tuition in the student's final academic term of the program. Students enrolled in Advanced Standing will receive full amount of funds toward tuition in the student's final academic term of the program.




TAKE ADVANTAGE OF A

HEAD START

If you have already completed a CSWE-accredited Bachelor of Social Work (BSW) degree program with a GPA of 3.0 or higher (on a 4.0 scale), and demonstrate a solid grasp of the core principles in social work, you may qualify for Advanced Standing at Yeshiva University. If accepted, Advanced Standing students will enter the online MSW program in their concentration year and be required to complete 30 credit hours.

If accepted and pursuing the general-track MSW, Advanced Standing students will enter the program in their concentration year and be required to complete 30 credit hours.



Yeshiva University offers two optional focuses.

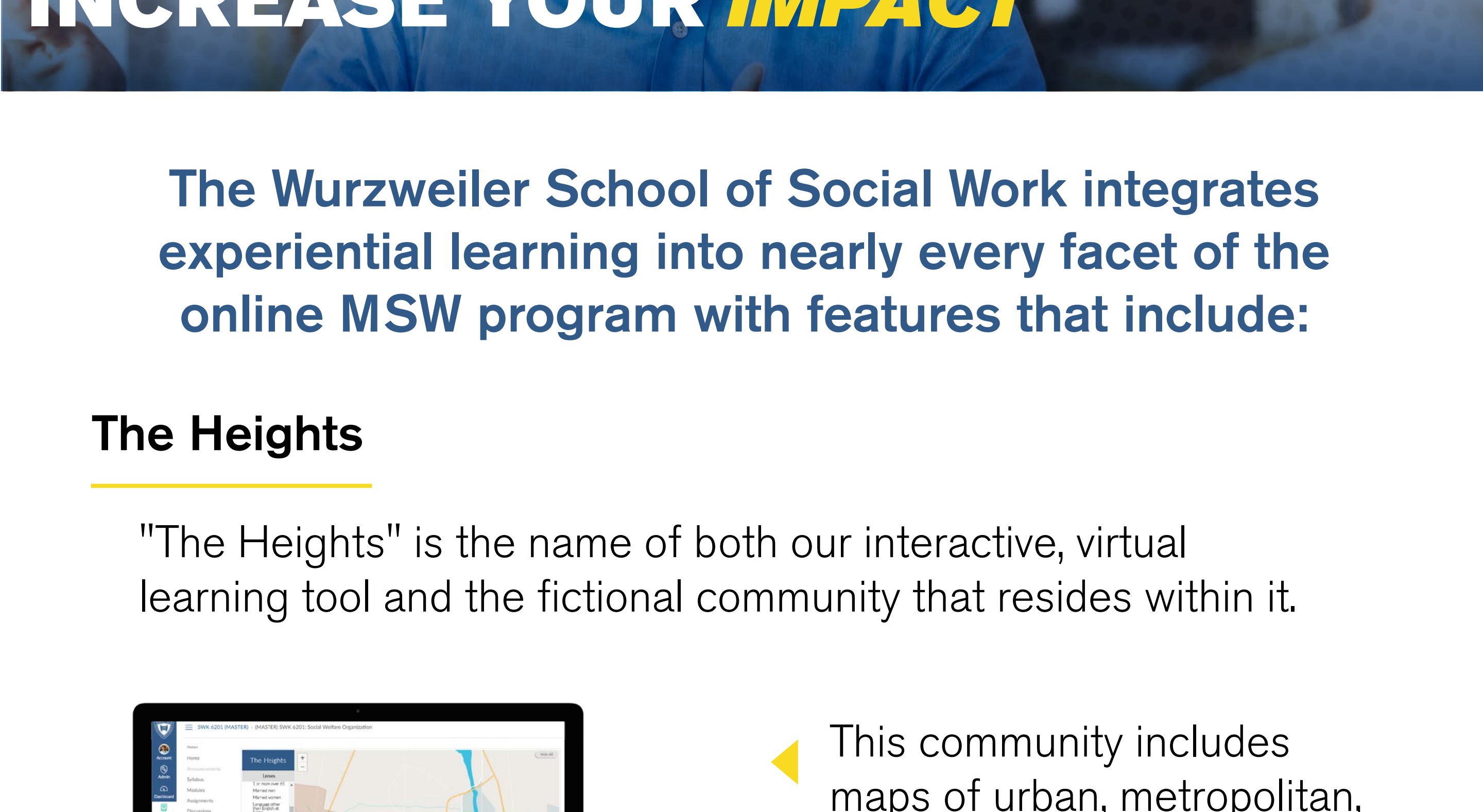
With either focus, you will still earn an MSW preparing you for an impactful career working with a number of different groups and individuals. However, you will also gain a substantial knowledge base to address certain communities' unique challenges.

MSW with Gerontology and Palliative Care Embedded Certification

Be a source of guidance and support for individuals and their families as they navigate the difficult challenges related to aging and serious illnesses.

Joint MSW and CASAC Credentialing Program

Develop a strong foundation in the key tenets of substance abuse disorder counseling while you work toward becoming dually credentialed in most U.S. states.




INCREASE YOUR

IMPACT

The Wurzweiler School of Social Work integrates experiential learning into nearly every facet of the online MSW program with features that include:

The Heights

"The Heights" is the name of both our interactive, virtual learning tool and the fictional community that resides within it.



◀

This community includes maps of urban, metropolitan, suburban and rural areas, which represent the various types of communities the social workers who train in our online program support.

This ensures our online MSW students will be able to operate in any community upon their graduation.

Learn More about the Heights

Fieldwork

Social work is based on relationship development and personal service. Success in this career demands practical experience and supervised exchanges with real clients. For most of our students, exposure comes through [face-to-face fieldwork](#). Fieldwork is mandatory throughout your time in the online MSW program and will put your studies into practice by introducing you to diverse client types and allowing you to implement and better understand all aspects of the counselor-client relationship.

ALL JOURNEYS HAVE A

STARTING POINT

THIS IS YOURS

Traditional Program

While the GRE is not required, our [basic requirements for admission](#) to our online MSW program **do include:**

- Completed [application](#)
- A GPA of at least 3.0 (on a 4.0 scale). Applicants with a GPA less than 3.0 (on a 4.0 scale) will be reviewed on an individual basis and considered for provisional admission; an interview and additional writing sample may be required
- Write a personal statement on what qualities you possess that would help you succeed in this program and ultimately as a social worker. It should be 500 words maximum in 12 point, Times New Roman font double-spaced. Please focus on quality over quantity.
- One letter of recommendation from professional or academic references
- Unofficial transcripts from academic institutions where nine or more credits were earned can be submitted via the online application to start the review process. If admitted, official transcripts provided directly from academic institutions where nine or more credits were earned must be submitted no later than one month prior to the first day of class
- \$50 non-refundable application fee submitted by credit card
- International students: All transcripts and letters of recommendation must be translated by an accredited service provider

Applicants who have been awarded a bachelor's and/ or graduate degree from an international higher education institution outside of the United States or a non-English speaking Canadian institution will need to submit a course-by-course [NACES transcript evaluation](#) (see [admissions requirements](#) for more details)

Advanced Standing

[For students applying for Advanced Standing](#) to our general-track, the following **additional** requirements must be met:

- A minimum GPA of 3.0 (on a 4.0 scale) and a bachelor of social work (BSW) degree from a CSWE-accredited program
- Final fieldwork evaluation from the BSW program

“Understanding the various stages of development of self, maturity and morality have afforded me more insight into the struggles of my clients. **This helps me better guide them to where they need to go.**”

– Tamar Bezalely, MSW Candidate 2021

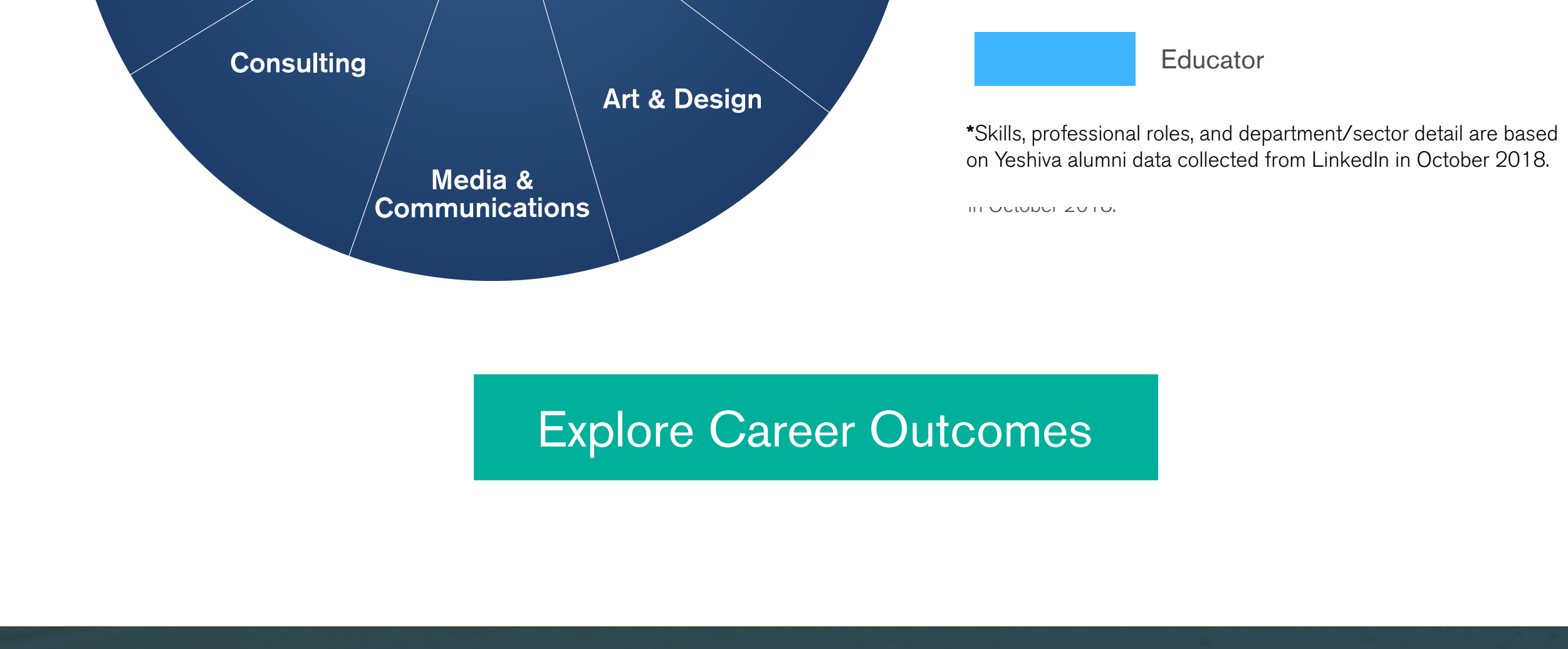


Study alongside students from a wide variety of industries with educational backgrounds that range from psychology and sociology to business, and from healthcare to liberal arts.

They'll challenge your understanding of social work and how it functions in different demographic groups and geographic locations, and [you'll find common ground](#) in your desire to create change for the better, whether that means locally or in the world at large.

Interdisciplinary Career Outcomes

See our infographic below to gain a better understanding of how a background in social work might help your career across different industries:

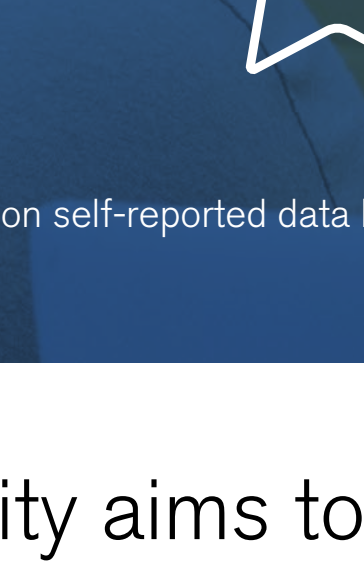


Explore Career Outcomes

About Our Students³

71%

female



29%

male



67%

of prospective students pursue the online MSW for career advancement



3 Retrieved on April 1, 2019, based on self-reported data by Yeshiva MSW students from cohorts starting in 2018 Fall-2019 Spring.

Yeshiva University aims to provide an innovative learning environment that fosters collaboration and integrates real-time case discussions, so that upon graduation, compassionate, tolerant and empathetic counselors leave our classrooms prepared to tackle [new professional challenges](#).

Students also get the chance to network with a tight-knit cohort of classmates who are employed by agencies and firms that include:

- New York State Office of Child & Family Services
- Law Offices of Gabriel Danon & Co.
- Baron Capital
- Urban Pathways
- Mercy First Foster Care Agency

“The Yeshiva online program gives me the flexibility to be in school from home! Being near my home allows me to still be a wife, mother, and sane. With the online curriculum, **I am still able to meet with my clients during the day.**”

– Tamar Bezalely, MSW Candidate 2021

Tips for Applying for an MSW

Here are some tips for crafting your submission so that you stand out amongst others applying for a MSW.

- 1. Review Tips
- 2. Personal Statement Tips
- 3. Resume Tips
- 4. Interview Tips
- 5. Letters of Recommendation Tips
- 6. Financial Aid Tips
- 7. Career Development Tips
- 8. Graduate School Tips
- 9. Graduate School Tips
- 10. Graduate School Tips

Great Tips for Your MSW Application

Check out our blog post on application tips for crafting your submission so that you stand out amongst others applying for an MSW.

Read More



Achieving your goals may not be easy, but it shouldn't be impossible.

Our program enables students to actively further their careers while setting themselves up for future success.

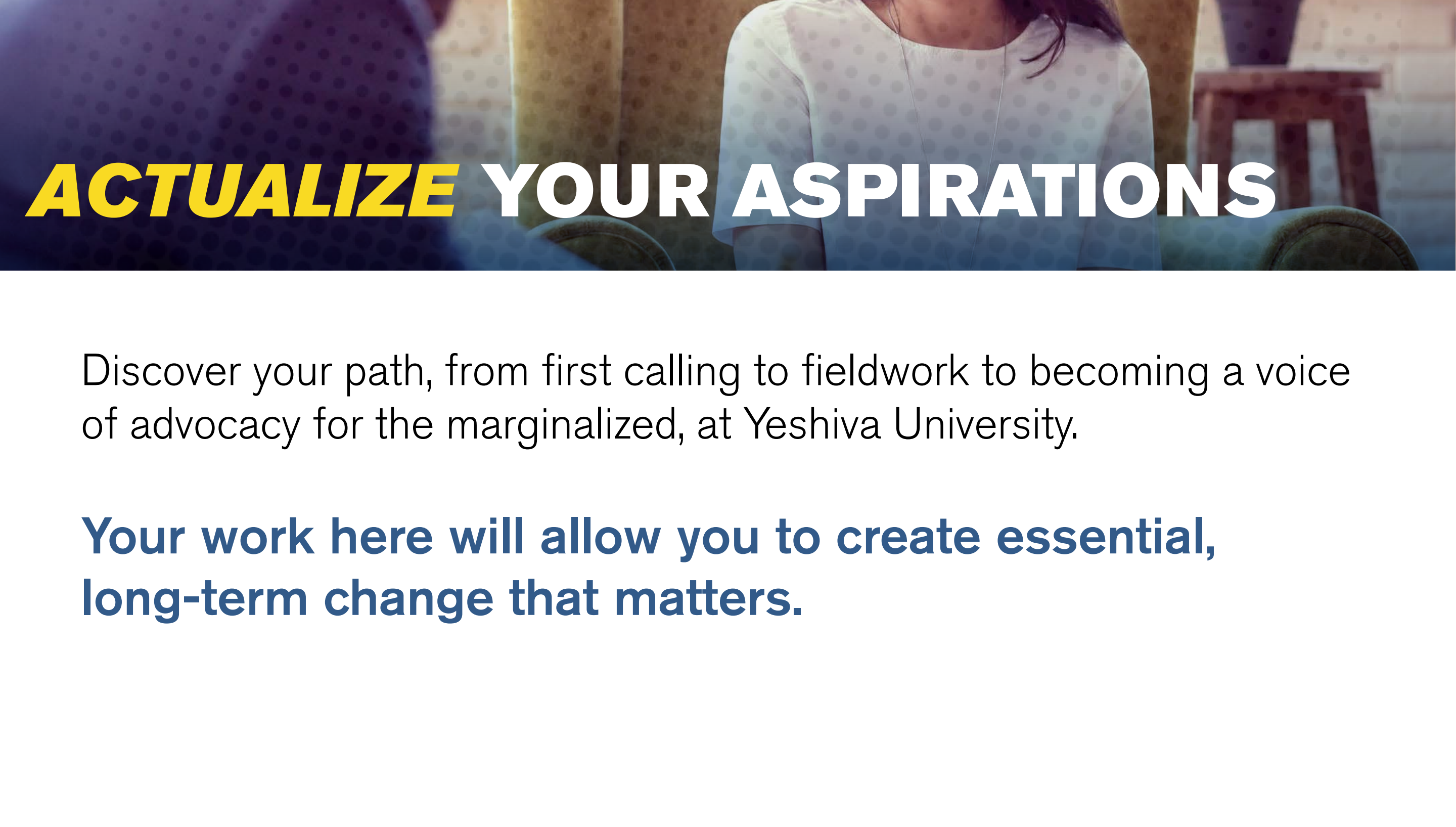
Here are some ways we help our MSW candidates on their journey:

- 10 percent degree completion scholarship⁴ for all new online students for the online Master of Social Work
- [Financial aid opportunities](#)
- Flexible hours allow you to keep your full-time job
- [Coursework](#), skills and methods that can be immediately applicable to your current job

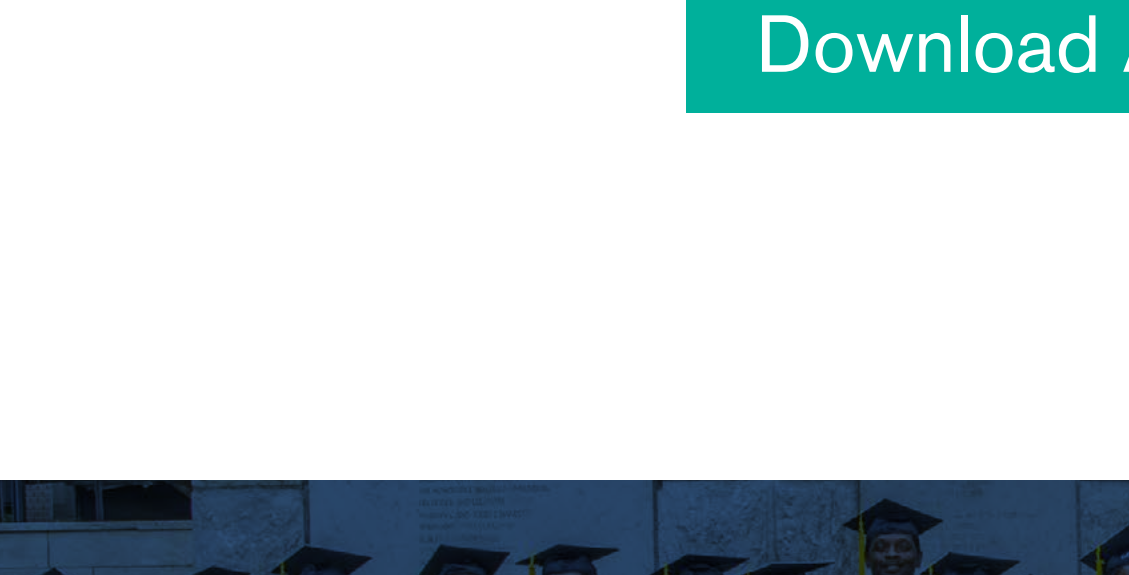
4. Degree Completion Scholarship offer available only to qualified new (first-time) enrollees for the Online Master of Social Work programs, not current or returning students to the program. Scholarship funds not payable directly to recipient. For traditional online MSW, half of the scholarship funds will be credited toward the tuition after completing 30 credits and then remaining amount will be credited toward tuition in the student's final academic term of the program. Students enrolled in advanced standing will receive full amount of funds toward tuition in the student's final academic term of the program. If student receives other forms of financial assistance, the student's financial assistance may require modification to account for the scholarship by preventing any over-award, such that the total financial assistance received does not exceed the cost of attendance, as defined and determined by the Office of Financial Aid of Yeshiva University. Recipients of the scholarship must remain continuously enrolled in the program through completion. Exceptions may be granted for students who obtain a university-approved leave of absence. Students receiving the scholarship must maintain satisfactory academic progress at all times for scholarship to remain in effect. This scholarship offer may be revised, rescinded or terminated at any time. All admissions and scholarship decisions of Yeshiva University are final.

“I really appreciate having all of the course information available to me at all times. Reviewing information in order to complete my assignments **has never been easier for me.**”

– Tamar Bezalely, MSW Candidate 2021



- Three start dates: Spring, Summer and Fall
- Flexible options available including traditional full-time, part-time options and [Advanced Standing](#)
- Dedicated Student Success Coordinator
- 24/7 tech support
- Access to on-site resources, including career and library services
- [Career resources](#)



◀ Taking advantage of its vast network of alumni, faculty and professional supporters, Yeshiva University is able to offer a substantial social work career center that includes a routinely updated [job board](#).

Schedule a Call With Student Support

Find Success with Your Faculty Advisor



The relationships you build at Yeshiva University have the potential to greatly impact your future, and your Personal Faculty Advisor is a perfect example. Learn more about faculty at Yeshiva University.

Get to Know Our Faculty



Discover your path, from first calling to fieldwork to becoming a voice of advocacy for the marginalized, at Yeshiva University.

Your work here will allow you to create essential, long-term change that matters.

Ready to apply?

Review our downloadable resource tools to help you submit a successful application.



Download Application Checklist



Apply Today